



## A spatial model of tree $\alpha$ -diversity and -density for the Amazon

HANS TER STEEGE<sup>1,2\*</sup>, NIGEL PITMAN<sup>3</sup>, DANIEL SABATIER<sup>4</sup>, HERNAN CASTELLANOS<sup>5</sup>, PETER VAN DER HOUT<sup>6</sup>, DOUGLAS C. DALY<sup>7</sup>, MARCOS SILVEIRA<sup>8</sup>, OLIVER PHILLIPS<sup>9</sup>, RODOLFO VASQUEZ<sup>10</sup>, TINDE VAN ANDEL<sup>1</sup>, JOOST DUIVENVOORDEN<sup>11</sup>, ALEXANDRE ADALARDO DE OLIVEIRA<sup>12</sup>, RENSKÉ EK<sup>1</sup>, RAMESH LILWAH<sup>13</sup>, RAQUEL THOMAS<sup>14</sup>, JESSICA VAN ESSEN<sup>15</sup>, CLAUDIA BAIDER<sup>16</sup>, PAUL MAAS<sup>1</sup>, SCOTT MORI<sup>6</sup>, JOHN TERBORGH<sup>3</sup>, PERCY NÚÑEZ VARGAS<sup>17</sup>, HUGO MOGOLLÓN<sup>18</sup> and WILFRIED MORAWETZ<sup>19</sup>

<sup>1</sup>National Herbarium of the Netherlands NHN, Utrecht University branch, Heidelberglaan 2, 3584 CS Utrecht, The Netherlands; <sup>2</sup>Department of Natural Resources, International Institute for Geo-information and Earth Observation (ITC), PO Box 6, 7500 AA Enschede, The Netherlands; <sup>3</sup>Center for Tropical Conservation, Box 90381, Duke University, Durham, NC 27708-0381, USA; <sup>4</sup>Institut de Recherche pour le Développement (IRD), 911 Avenue Agropolis, BP 5045, 34032 Montpellier cedex 1, France; <sup>5</sup>Universidad Nacional Experimental de Guayana, Calle Chile, Urbaniz Chilemex, Puerto Ordaz, Edo. Bolívar, Venezuela; <sup>6</sup>Department of Plant Ecology, Utrecht University, PO Box 80084, 3504 TB Utrecht, The Netherlands; <sup>7</sup>Institute of Systematic Botany, The New York Botanical Garden, Bronx, New York 10458-5126 USA; <sup>8</sup>Universidade Federal do Acre, Departamento de Ciências da Natureza/Parque Zoobotânico, BR 354, km 05, 69915-900 Rio Branco, Acre; <sup>9</sup>Centre for Biodiversity and Conservation, School of Geography, University of Leeds, Leeds LS2 9JT, U.K.; <sup>10</sup>Proyecto Flora del Perú, Jardín Botánico de Missouri, Jaen, Cajamarca, Peru; <sup>11</sup>Institute for Biodiversity and Ecosystem Dynamics, Universiteit van Amsterdam, Kruislaan 318, 1098 SM Amsterdam, The Netherlands; <sup>12</sup>Universidade Paulista, Lab. Botânica, Av. Paulista 900 1º andar., São Paulo-SP, 01310-100, Brazil; <sup>13</sup>Environmental Protection Agency, IAST Building, Turkeyen Campus, Greater-Georgetown, Guyana; <sup>14</sup>Iwokrama International Centre for Rain Forest Conservation & Development, PO. Box 10630, 67 Bel Air, Georgetown, Guyana; <sup>15</sup>Department of Comparative Physiology, Utrecht University, Padualaan 14, 3584 CH Utrecht, The Netherlands; <sup>16</sup>Universidade de São Paulo, IB/ Ecologia, Rua do Matão / Trav. 14, 321. São Paulo- SP 05508-900 Brasil; <sup>17</sup>Herbario Vargas, Universidad Nacional San Antonio de Abad de Cusco, Cusco, Peru; <sup>18</sup>NUMASHIR, Fundación para la Conservación de Ecosistemas Amenazados. Casilla postal 17 01 9149 Quito, Ecuador; <sup>19</sup>Institut für Botanik - Spezielle Botanik, Universität Leipzig, Johannisallee 21-23, D-04103 Leipzig, Germany.

\* Author for correspondence. (E-mail: [h.tersteege@bio.uu.nl](mailto:h.tersteege@bio.uu.nl); fax: +31 30 251 8061)

Received 11 July 2002; accepted in revised form 9 December 2002

**Key words:** Amazon, Guayana Shield, tree  $\alpha$ -diversity, tree density, kriging, quantile regression, planning inventories.

**Abstract.** Large-scale patterns of Amazonian biodiversity have until now been obscured by a sparse and scattered inventory record. Here we present the first comprehensive spatial model of tree  $\alpha$ -diversity and -density in Amazonian rainforests, based on the largest-yet compilation of forest inventories and bolstered by a spatial interpolation technique that allows us to estimate diversity and density in areas that have never been inventoried. These data were then compared to continent-wide patterns of rainfall seasonality. We find that dry season length, while only weakly correlated with average tree  $\alpha$ -diversity, is a strong predictor of tree density and of maximum tree  $\alpha$ -diversity. The most diverse forests for any given dry season length are concentrated in a narrow latitudinal band just south of the equator, while the least diverse forests for any given dry season length are found in the Guayana Shield and Amazonian Bolivia. Denser forests are more diverse than sparser forests, even when we used a measure of diversity that corrects for sample size. We propose that rainfall seasonality regulates tree  $\alpha$ -diversity and -density by affecting shade tolerance and subsequently the number of different functional types of trees that can persist in an area.

## Introduction

Biodiversity mapping and modelling is an increasingly useful tool for ecology and conservation but it has not yet produced a reliable picture of diversity patterns in the world's most species-rich forest (Phillips *et al.*, 1994; Gentry, 1988a, b; Gaston, 2000; Myers *et al.*, 2000; Condit *et al.*, 2002).

The Amazon, which harbours a very significant portion of the world's diversity Myers *et al.* (2000), is a perfect natural laboratory for the study of tree diversity because of its size and its bio-physical gradients. The number of plots has risen steadily over the years and is probably much greater than in any other tropical region. Most studies examining the patterns of plant diversity in the Neotropics, however, have relied heavily on plots in western Amazonia (Clinebell *et al.*, 1995; Gentry, 1988a, b; Givnish, 1999; Phillips *et al.*, 1994; Terborgh & Andresen 1998; but see ter Steege *et al.* 2000). In western Amazonia species richness is found to be strongly correlated with total annual rainfall (Gentry 1988a, b), often considered a proximate estimate of ecosystem productivity (Clinebell *et al.* 1995, Gentry 1988a, b; Phillips *et al.* 1994). The rainfall-diversity relationship has been confirmed by other studies outside the Amazon (Huston 1980, 1994; Hall & Swaine 1976). In each of these studies fertility was negatively correlated with rainfall, which has complicated the search for single causal relationships. Ter Steege *et al.* (2000) showed that, when the whole of the Amazon was taken into account, rainfall was a poor estimator of tree  $\alpha$ -diversity in 1-ha plots.

A closer inspection of the data of ter Steege *et al.* (2000) suggests that while rainfall and rainfall seasonality may not be good estimators of average tree  $\alpha$ -diversity, they may be good estimators of maximum diversity. As many more factors may have an effect on tree  $\alpha$ -diversity, these may obscure this relationship. If such factors interact rather than act in an additive manner, standard regression methods are not capable of detecting proper relationships. Recently, a more advanced method has become available for ecology (Cade *et al.*, 1999) that has been pioneered in the field of econometrics (Koenker & Basset, 1978). With this technique, quantile regression, interacting factors may be studied even if not all such factors have been measured. Further details can be found in the methods section.

Since our previous publication (ter Steege *et al.*, 2000) much more plot data has become available and in this paper we have two main objectives:

1. Use a statistical model to generate an improved, most accurate spatial model to date, of tree  $\alpha$ -diversity of the Amazon, including an error map that may assist to plan future plot establishment. The results of this model will be available on our website (see below) and regularly updated.
2. Describe the rainfall-diversity model as a model of limiting factors, whereby rainfall seasonality is one of the main factors limiting tree  $\alpha$ -diversity at a regional level, others factors being interactive with it.

We have no a priori assumptions what the most important other interacting factors might be but by eliminating plots on 'special' soil types, such as white sands, floodplains and swamps, that generally have lower diversity than *terra firme* forest plots (ter Steege *et al.*, 2000), we already eliminate some sources of variation. If the unknown factor(s) act at a regional level, mapping them should reveal a geographical pattern. Hence, we also map the other total of unknown limiting factors to discern this.

## Methods

The total number of plots with data, presently known to us in the Amazon, which here includes the forest region of the Guayana Shield, is 425<sup>1</sup>. For the analyses we used forest plots on *terra firme* only, leaving out plots on white sands, floodplains and swamps, plots outside the Amazon, and plots with incomplete data. The final selection was 275 plots. This set mainly included 1-ha plots but in areas of low plot density also smaller (if plots that had more than 150 individuals of trees with a dbh  $\geq 10$  cm) or larger ones. Most (228) plots were 1 ha in size, 18 plots were between 0.25 – 1 ha, 20 plots were between 1 – 4 ha, and 9 were plotless line samples with 200 - 800 individuals (equivalent to c. 0.4 – 1.6 ha). To standardize  $\alpha$ -diversity we used Fisher's  $\alpha$  (Fisher *et al.*, 1943), which corrects well for variation in sample size (Taylor *et al.*, 1976; Rosenzweig, 1995; Leigh, 1995; Condit *et al.*, 1998)

Tree density was calculated on a hectare basis. For the plotless samples the tree density was extracted from the publications concerned, if this data was presented there. Otherwise the samples were omitted for the density estimates.

### *Mapping tree $\alpha$ -diversity*

Because the plots over-sample some areas of Amazonia and under-sample others, we used a spatial model based on universal kriging (Burrough & McDonnell, 1998; Kanlunzy *et al.*, 1998) to estimate diversity in one-degree cells across the region. The theory and process is explained briefly below:

The regionalized variable theory assumes that the spatial variation of any variable  $Z$  at location  $x$  can be expressed as the sum of a structural component ( $m$ : a constant mean or a trend), a random but spatially correlated component ( $\varepsilon'$ : the regionalized variable), and a residual error term ( $\varepsilon''$ ), that is not spatially correlated (Burrough & McDonnell, 1998):

$$Z = m(x) + \varepsilon'(x) + \varepsilon''$$

We used a loess regression to detect the structural component ( $m$ ). The loess regression explained 64% of the variation in Fisher's  $\alpha$ . The residuals from the loess regression are equal to  $\varepsilon'(x) + \varepsilon''$  and were analysed with variogram analysis (Burrough & McDonnell, 1998; Kanlunzy *et al.*, 1998). In the residuals, a clear spatial structure was present, and this improved very much after the removal of two outlier plots. An exponential model fitted the variogram data well and showed autocorrelation up to c. 2.2 degrees. As a consequence, interpolation was carried out with the exponential variogram results and with inclusion of a spatial trend model. This is known as universal kriging.

The statistical model used by kriging also produces error estimates. These errors were also mapped for inspection and may serve as a useful tool for planning further exploration.

Estimates are only presented for the forest area of the region based on an interpretation of NOAA-AVHRR NDVI satellite data (<http://terra.whrc.org/>). This area includes 567 1-degree grid cells.

To examine the effect of spatial and ecological variables on diversity we used the kriging model predictions for each 1-degree grid cell. We took this course because several sites had many points close together, violating a main assumption of regression analysis -

independence of data (this assumption is opposite to the requirement of kriging, which assumes and then estimates spatial dependence in the data). We tested the accuracy of the model's estimates by removing each single plot from the dataset, allowing the model to re-estimate the diversity of its cell with the remaining dataset, and then comparing the estimated diversity (for the grid cell) with the actual diversity of the removed plot. In this way the plot's own value has no influence on its estimated value. Thus, the complete interpolation process was carried out 275 times. We will call this the jackknifed estimation (a more correct term might be the studentized estimation - Venables & Ripley, 1998).

*Rainfall and tree  $\alpha$ -diversity*

To study the effect of rainfall on tree  $\alpha$ -diversity we used Dry Season Length (DSL), which was defined as the number of months with < 100 mm of rain. DSL was extracted for every one-degree grid cell in the region from a digitised map (data from Sombroek, 2001; Figure 1). Sombroek (2001) did not distinguish between zero and one month of dry period and for calculations we classified both as zero.

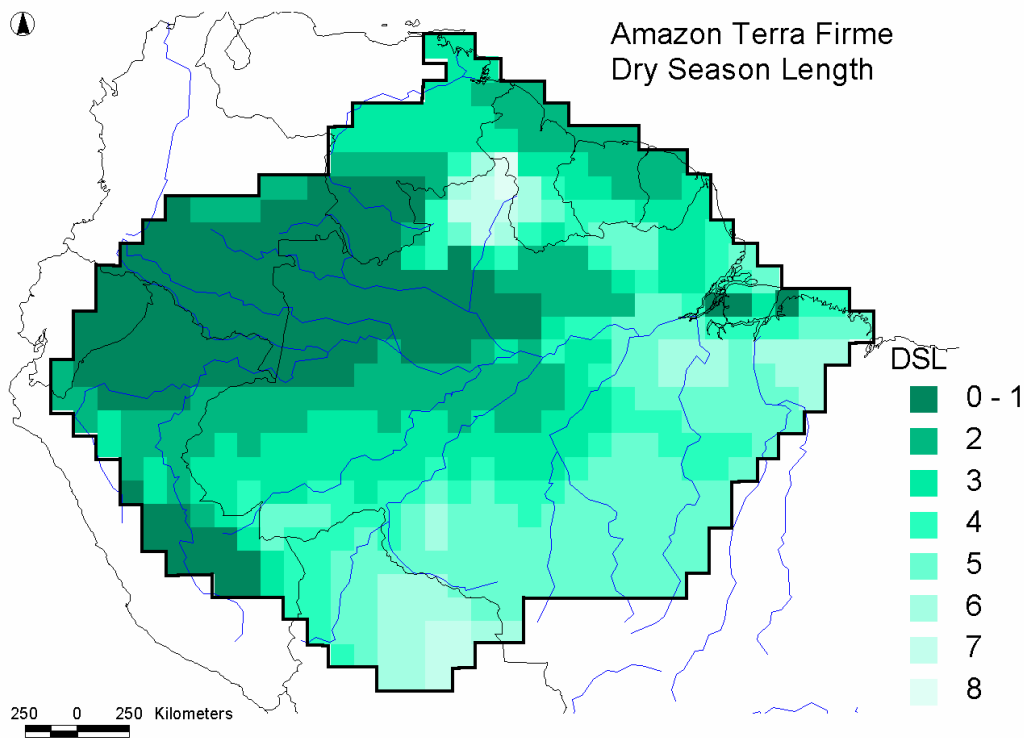


Figure 1. Map of dry season length (DSL) (data after Sombroek, 2001), expressed as the number of months with <100 mm of rain.

Limiting factor theory assumes that factors influencing the dependent variable act heterogeneously (read: independently) over the landscape. Near the upper bound of the distribution, the factor under consideration is considered to be actively limiting the dependent variable. Variation below these maxima is caused by the interacting influence of other (often unmeasured) factors. We used quantile regression (Koenker & Basset, 1978; Cade *et al.*, 1999) to examine whether DSL was correlated with maximum diversity and tree density (Cade *et al.*, 1999). We used the module *regq*, written for S-plus (Cade *et al.*, 1999). Two important assumptions of quantile regression are the existence of other interacting limiting

factors and the fact that the dependent variable will attain its true maximum for the limiting factor (the measured independent variable) under investigation. While there are several factors that can be thought to influence diversity (disturbance, soil type (which was already eliminated)) we have no absolute proof of maximum tree  $\alpha$ -diversity anywhere in the Amazon. However, it is difficult to imagine plots richer than some in western or central Amazonia where plots of c. 600 individuals may contain c. 300 species (e.g.: Gentry, 1988a; Oliviera & Mori, 1999; Vasquez & Phillips, 2000).

We used an interference interaction model (Cade *et al.*, 1999), in linear form, where tree  $\alpha$ -diversity ( $Z$ ) is a linear (negative) function of DSL and its interaction with other interacting factors (OIF):

$$Z = \alpha + \beta * (1 - OIF) * DSL + \epsilon$$

If OIF = 0 (the upper bound of the distribution for DSL) this reduces to:

$$Z_{\max} = \alpha + \beta * (DSL) + \epsilon$$

This is equal to the maximum  $Z$  for a given DSL (in other words it is the real relationship between Dry Season Length and average tree  $\alpha$ -diversity for the grid cells). The parameters  $\alpha$  and  $\beta$  were estimated by calculating the regression equation for 90<sup>th</sup> percentile, where OIF approaches zero. To study whether OIF is either related to climatic factors or has an otherwise geographic pattern its estimated value was calculated as:

$$OIF = (Z_{\max} - Z) / \beta * DSL + \epsilon'$$

## Results

### *Mapping diversity and density*

Both the raw and the interpolated plot data show the region's peak of average tree  $\alpha$ -diversity as a large swath of mostly a-seasonal forest stretching along the equator from Ecuador, northern Peru, and southern Colombia into central Amazonian Brazil (Figure 2). *Terra firme* tree  $\alpha$ -diversity is highest in the vicinity of Iquitos, Peru, and Manaus, Brazil and lowest in Bolivia and the Guayana Shield forests, with the exception of central-south French Guiana.

Average tree density for 1-degree grid cells in Amazonia varies from ca. 400 to 750 trees ha<sup>-1</sup> and shows a distribution similar to that of tree  $\alpha$ -diversity, but with a more pronounced peak in western Amazonia (Figure 3). Forests in western Amazonia are on average 150 stems ha<sup>-1</sup> denser than those in eastern Amazonia.

The accuracy of the spatial model is high and the jackknifed estimation explains 80% of variance in the diversity of the removed plots (n=275, data not shown).

The errors in the spatial model are largest where there are few plots in the 'neighbourhood' (Figure 4). These areas include the region in Pará below the Guianas, the Tapajós River basin, central Colombian Amazon, and the border region of north western Peru and Ecuador.

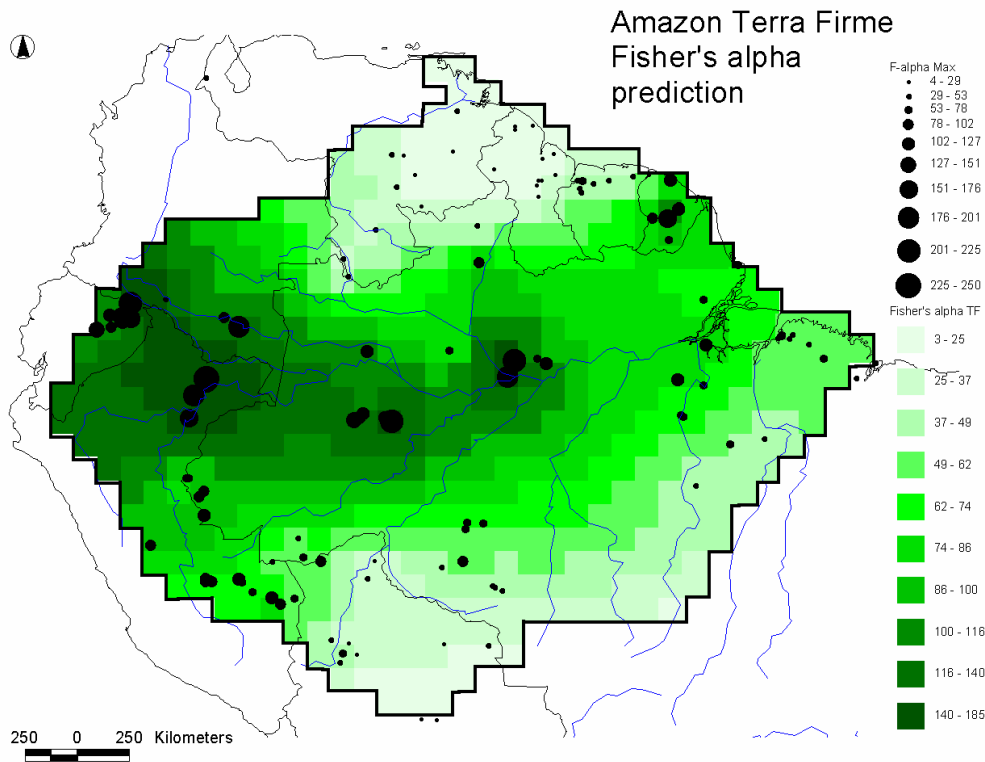


Figure 2. Map of average tree  $\alpha$ -diversity (Fisher's  $\alpha$ ) based on 275 plots in *terra firme* forest in the Amazon and Guayana Shield rain forest area mapped on a one-degree grid cell scale. Extent of tropical wet/moist and semi-deciduous forest area is based on NOAA-AVHRR NDVI satellite data (<http://terra.whrc.org/>). Diversity is highest in a narrow band from western Amazonia towards central Amazonia and peaks around Iquitos and Manaus. Dots indicate the maximum Fisher's  $\alpha$  found at one location ( $n=275$ ). Because many plots may be in close proximity (and overlapping) much less than 275 dots are visible.

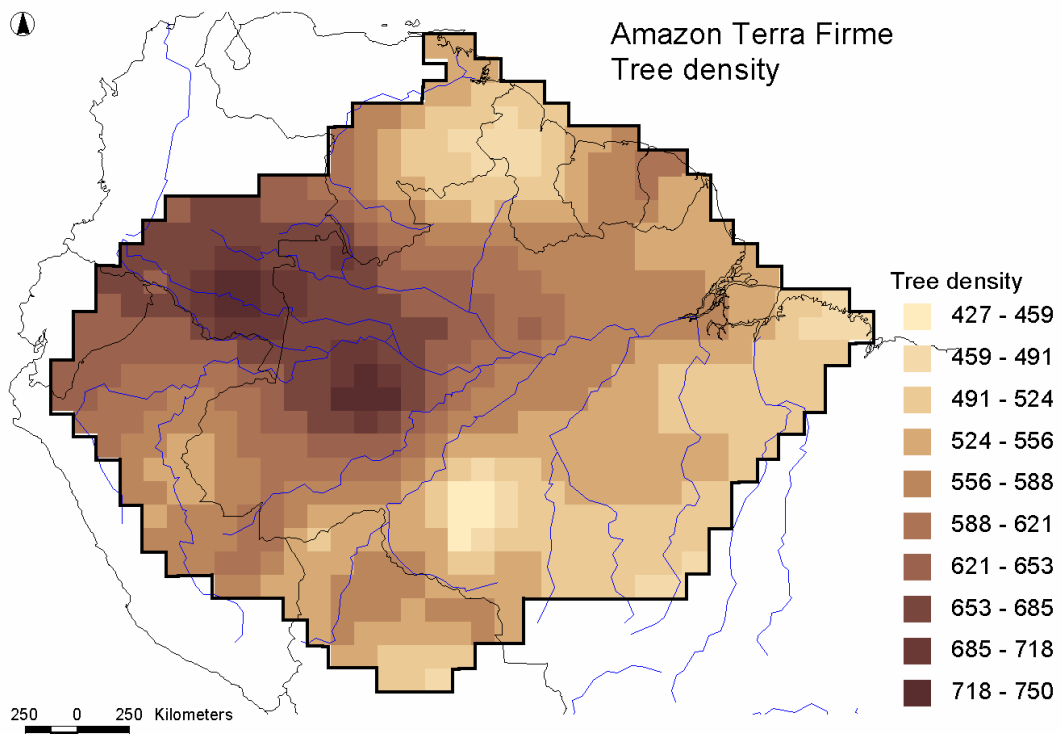


Figure 3. Map of average tree density (trees  $\geq 10$  cm DBH  $\text{ha}^{-1}$ ) across the Amazon. Forests in western Amazonia have on average 150 more stems per ha than those in eastern Amazonia.

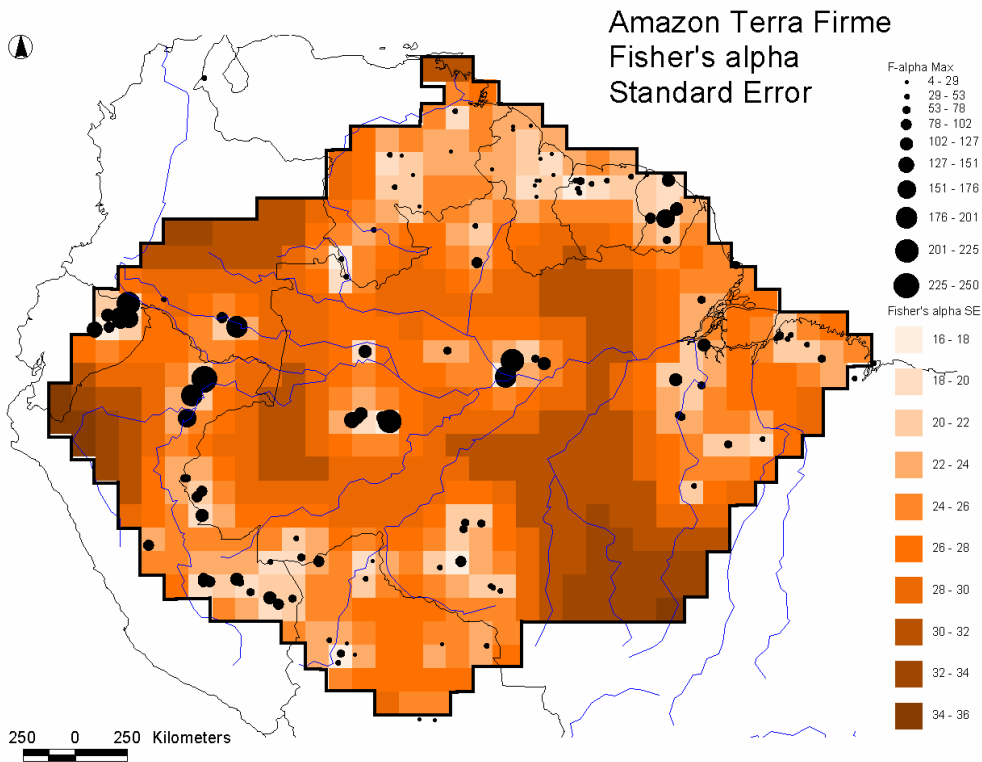


Figure 4. Map of standard errors in tree  $\alpha$ -diversity (Fisher's  $\alpha$ ) as produced by the spatial model obtained by universal kriging (Figure 2).

#### Rainfall, tree $\alpha$ -diversity and density

We find DSL to be negatively correlated with diversity and density. However, DSL is a much stronger predictor of estimated maximum diversity (Figure 5;  $R^2 = 0.91$ ,  $p \ll 0.001$  for 90<sup>th</sup> quantile) than of estimated (average) diversity ( $R^2 = 0.35$ ,  $p \ll 0.001$ ,  $n = 567$  grid cells). This same pattern is also present in the raw plot data (Figure 1, inset), the only difference being that very high local values have been smoothed out by the spatial interpolation.

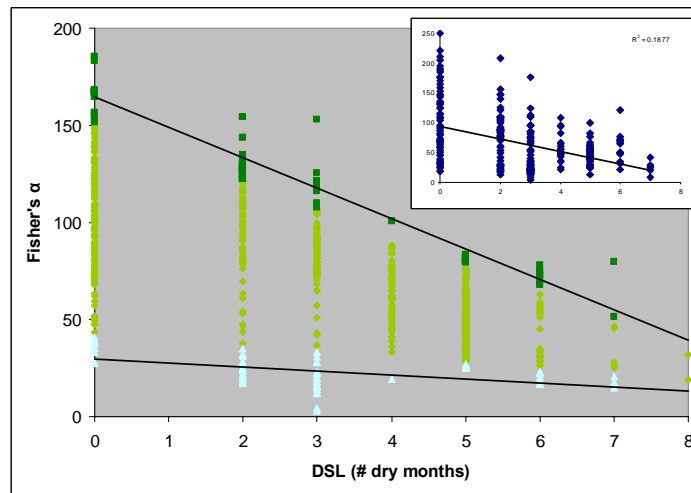


Figure 5. Modelled Fisher's  $\alpha$  as a function of dry season length (DSL). An increase in dry months strongly limits the average maximum tree  $\alpha$ -diversity found at a site. Dark green: Grid cells with Fisher's  $\alpha$  over the 90<sup>th</sup> quantile (rainfall-seasonality is the main limiting factor to tree  $\alpha$ -diversity); light green: grid cells with Fisher's  $\alpha$  below the 10<sup>th</sup> quantile (rainfall-seasonality has no marked effect on tree  $\alpha$ -diversity in these grid cells). The slopes of the two regression lines differ significantly. Inset shows same relationship for actual plot data with least squares regression to show weak overall relation between DSL and tree  $\alpha$ -diversity.

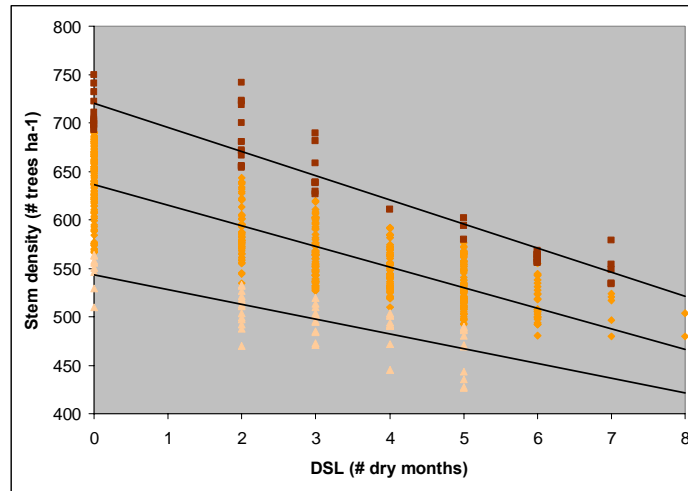


Figure 6. Average tree density (trees ha<sup>-1</sup>) of Amazonian one degree grid cells as a function of dry season length (DSL). Dark brown: grid cells with density higher than the 90<sup>th</sup> quantile; light brown grid cells with density below the 10<sup>th</sup> quantile. Although the slopes of the 90<sup>th</sup> and 10<sup>th</sup> quantile differ significantly, they are practically similar in absolute value, suggesting that seasonality is a main factor influencing tree density in the Amazon.

The effect of the OIF is in fact of such magnitude that minimum tree  $\alpha$ -diversity is almost equal for each DSL. The regression line for the 10<sup>th</sup> quantile is nearly horizontal, its slope still significantly different from zero but more so very significantly different from the slope of the 90<sup>th</sup> percentile. This indeed supports the existence of interaction factors acting on tree  $\alpha$ -diversity.

Average tree density is more strongly under control of seasonality than is tree  $\alpha$ -diversity (Figure 6;  $R^2 = 0.52$ ,  $p \ll 0.001$ ). The higher and lower quantile regression lines are nearly parallel (Figure 6), suggesting that seasonality is the main effect, with others factors being mostly additive, rather than interacting.

Even though Fisher's  $\alpha$  values are standardized for density (at the plot level), we still find a relatively strong positive relationship between interpolated tree density and interpolated Fisher's  $\alpha$  for the 567 grid cells (Figure 7;  $R^2 = 0.46$ ,  $P \ll 0.001$ ).

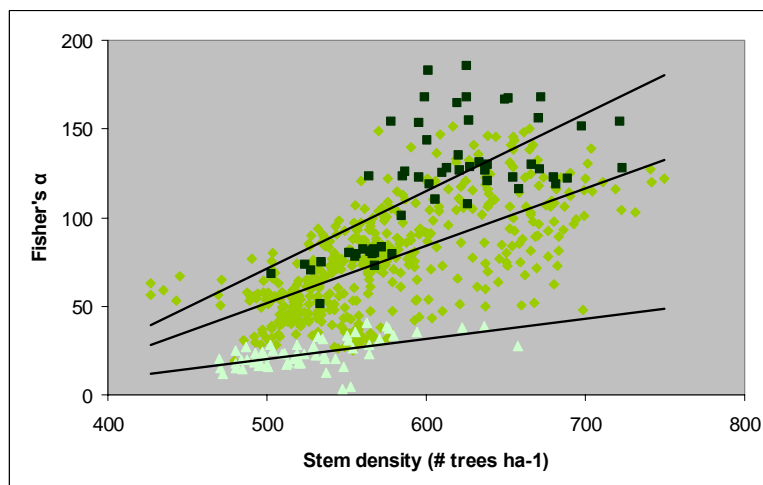


Figure 7. Fisher's  $\alpha$  is still influenced by average tree density in one degree grid cells, suggesting that density has a regional effect of diversity. This effect is present in the high, medium and low quantile data (see Figure 4).

A spatial null-hypothesis is that grid cells with average Fisher's  $\alpha$  above the 90<sup>th</sup> quantile and those below to 10<sup>th</sup> (Figure 5) are randomly distributed over the spatial gradient of DSL (cf. Figure 1). When we map these grid cells, those with the highest diversity for any DSL regime (OIF = 0) are found within in a single band in central Amazonia, just south of the equator. The least diverse grid cells, where seasonality is only of limited influence on tree  $\alpha$ -diversity (OIF = maximum) are concentrated in two geographically distinct areas: the north-western Guayana Shield and Bolivia. In Figure 8 this is shown in a slightly different manner as the strength of the OIF between 0 and 100%. The band where the OIF are of little influence is clearly visible below the Amazon River.

The 'other interacting factors' (OIF) have a strong unimodal relationship with latitude, peaking at 5° S (Figure 9). This unimodal pattern is obvious with and without the data related to the 10<sup>th</sup> quantile (Figure 9) and also if data is plotted for each DSL value separately (data not shown). In other words even if rainfall has been corrected for (correlation between OIF and DSL is non-existent -  $R^2 = 0.003$ ) there is still a very strong regional spatial pattern in tree  $\alpha$ -diversity, peaking at 5° S.

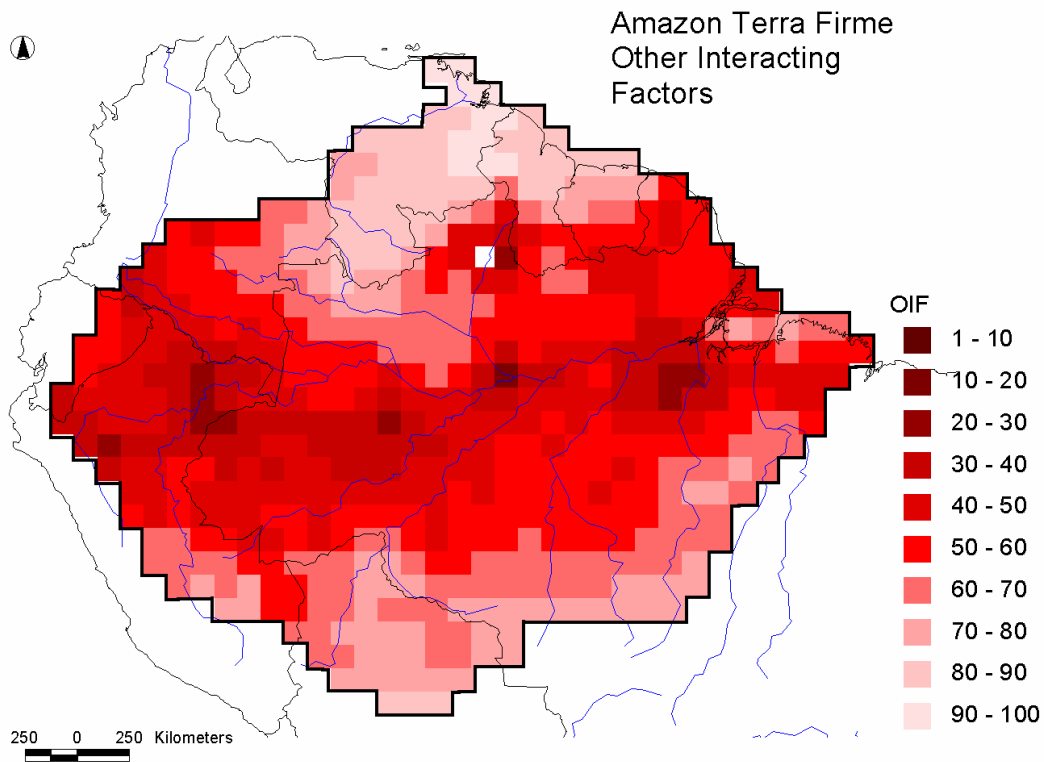


Figure 8. Spatial distribution of the 'Other Interacting Factors' (OIF). OIF is displayed as a percentage of its maximum: 100 indicates interacting factors at maximum and rainfall not important in determining tree  $\alpha$ -diversity; 0 indicates that rainfall is the major limiting factor for tree  $\alpha$ -diversity.

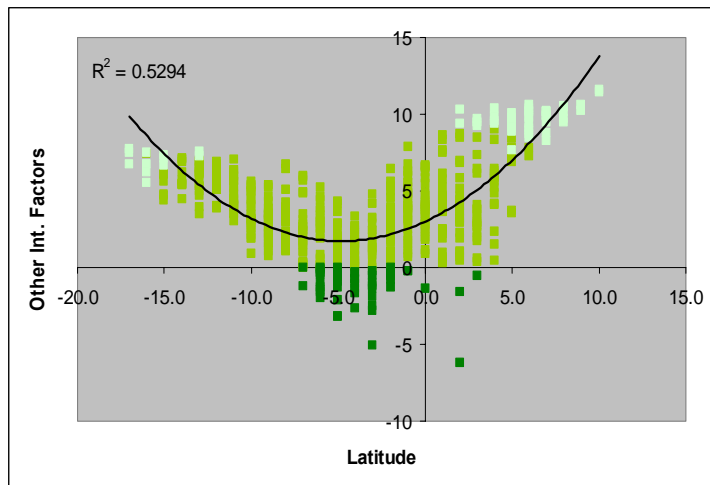


Figure 9. Latitude vs. 'Other Interacting Factors' (OIF). OIF are least limiting (most positive) around 5° S, the central band of the Amazon forest region.

## Discussion

### *Mapping tree $\alpha$ -diversity and tree density in the Amazon*

As the accuracy of the spatial model, tested with the jackknifed estimation was high, this suggests that the tree  $\alpha$ -diversity of unmeasured areas can be estimated with a fairly high level of accuracy. The same pattern as shown in Figure 2 was also apparent in an earlier diversity map (based on inverse distance weighting) drawn with data from >100 fewer plots (ter Steege *et al.*, 2000), also suggesting that the pattern may be robust despite the immense areas still unexplored by botanists and ecologists in Amazonia. New data not yet included in the map (T.W. Henkel, in press; D. Sabatier *et al.* unpublished data; J. Schulz & J. Lindeman, unpubl. data, A. Duque, unpubl. data) also correspond well to the modelled pattern.

The pattern is in stark contrast, however, with previous maps of diversity in the Amazon (Prance *et al.*, 1982; Conservation International, 1990) and suggests that the main diversity pattern in the Amazon may be much more simple in its spatial configuration with consequences for inferred forest history (see also Bush, 1994).

### *Errors are useful for planning*

Although the general prediction of tree  $\alpha$ -diversity of excluded plots by the model was quite accurate, errors are not equally distributed over the map. Errors in the spatial model are largest where there are few plots in the 'neighbourhood' (Figure 4). As mentioned above, these areas include the region in Pará below the Guianas, the Tapajós River basin, central Colombian Amazon, and the border region of north western Peru and Ecuador. Mapping of diversity in the Amazon would benefit most from new plots in these areas. In the southern part of Colombia (Leticia) and adjacent Brazil errors are slightly smaller and, in addition to that, new plots have already been established there (A. Duque, pers. comm.).

### *The main pattern: drought is limiting diversity but what is cause and what is correlation?*

DSL was a much stronger predictor of estimated maximum diversity than of estimated (average) diversity on the modelled and raw data (Figure 5), as predicted by limiting factor theory. Based on the results of the quantile regression we suggest that DSL has a strong

(linear) effect on diversity, an effect that is, masked by other interacting factors (OIF) in the full dataset. The effect of the OIF is in fact of such magnitude that minimum tree  $\alpha$ -diversity is almost equal for each DSL.

While our results are in general agreement with previous studies (Huston, 1980; 1994; Hall & Swaine, 1976; Clinebell *et al.*, 1995; Phillips *et al.* 1994), the strong relationship between maximum tree  $\alpha$ -diversity and DSL and potential interacting limiting factors demonstrates why researchers see such contrasting results when they compare rainfall regime and tree diversity – they look at mean diversity, not maximum potential diversity. Secondly, our results support hypotheses that consider the effect of the length of the growing season and number of potential co-existing functional types, which can be considered a proxy measure for diversity. Recently, two such mechanistic models have shown that, at global level, the length of the growing season may indeed determine the number of functional types, and hence species, that can exist (Kikuzawa, 1996; Kleidon & Mooney, 2000).

We suggest that, in the Amazon, density and diversity may be driven by the same ecological factor (see also Pittman, 2000): DSL. High constant moisture is thought to increase shade tolerance, higher densities, and subsequently a higher number of functional guilds in the understorey (Huston, 1994). Indeed in western Amazonia the higher density (of individuals  $\geq 10$  cm dbh) is a result of higher density of smaller understorey trees (Pitman, 2000) and this effect may even be stronger for yet smaller size classes (Givnish 1999 – who did **not** find the effect in the size classes  $\geq 10$  cm dbh in the “Gentry dataset”, however!). If our thoughts are correct, these ‘extra’ individuals should, at least for a significant part, consist of other species and of other functional guilds, increasing diversity more than if they would consist of seedlings and saplings of the overstorey trees alone. This would also explain that even when we correct for density by using Fisher’s  $\alpha$  there is still an effect of average tree density on tree  $\alpha$ -diversity (Figure 7).

We do not have complete data for all plots (individual trees and their diameters) but propose a simple test for this hypothesis. If indeed an increased diversity in western Amazonia is caused by the higher diversity of small individuals, calculating Fisher’s  $\alpha$  separately for individuals  $< 20$  cm and for trees  $\geq 20$  cm should reveal a difference when carried out for eastern, central and western Amazonia.

One other causal factor that is in accordance with the results, are insect- and fungal pressure that are both thought to increase strongly with (more predictable, constant) moisture and mediate tree diversity through species-specific density-dependent mortality (Givnish, 1999; E.G. Leigh, pers. comm.; but see Hille Ris-Lambers *et al.* 2002; ter Steege & Zagt, 2002). This prediction should also lead to testable hypotheses in dry and wet areas with maximum diversity.

#### *Other spatial causes*

The ‘other interacting factors’ (OIF) have a strong unimodal relationship with latitude (Figs. 8, 9) peaking at 5° S and this unimodal relationship is not related to rainfall. We suggest that at present this maximum diversity (for any given seasonality) in greater Amazonia is best explained by a stochastic null-model (Colwell & Lees, 2000) that predicts that even in the absence of an environmental gradient, the highest number of species will be found in the central portion of a geographical domain, which for the Amazon forest coincides largely with

a band around 5° S. This higher ‘regional species pool’ results in higher potential tree  $\alpha$ -diversity in plots as well, which is our measure used.

In addition to that, we hypothesise that the consistently low diversity in the Guianas may also be the result of the small size of this area, compared to the major Amazon forest block (see Rosenzweig, 1995; Terborgh, 1973; ter Steege *et al.*, 2000). The Bolivian area includes many wet savannahs and may have become forested only very recently in geological time (Mayle *et al.* 2000), which may also contribute to its low diversity and high abundance of well-dispersed families with several fast growing species, such as Moraceae (ter Steege *et al.* 2000).

#### *A caution for conservation planning*

While the data presented increase our insight into potential factors influencing tree  $\alpha$ -diversity, we caution the use of diversity maps as a single source of data for conservation planning. Although the Guayana Shield and the Bolivian area have much lower diversity than central and western Amazonian areas, their species are not just a sub-sample of the latter area. In addition to that, within the areas of equal diversity, gradients in species composition ( $\beta$ -diversity) are continuously present (western Amazonia and Panama: see Condit *et al.*, 2001; Guayana Shield: Sabatier, unpublished data; ter Steege, unpublished data). Such information is also crucial if a representative portion of the area’s diversity is to be protected.

#### *A bit about the future*

The map and some associated data will be published on the website of our Amazonian Plot Network, accessible through:

<http://www.bio.uu.nl/~herba/research.html>

It is our intention to update this web-based map regularly as newly published plot data becomes available. Some of us and colleagues have already started with the establishment of new plots in areas where coverage is low (Pitman *et al.* Peru, Ecuador) or are planning to do so (C. Peres, Tapajós and other Brazilian parts; B. Hoffman, south Suriname). We would also welcome and acknowledge plot data sent to us by others.

As there are much fewer plots on floodplains (64) and even fewer in swamps (20) and on white sand podzols (14), maps for these plots are not well feasible (for some information see ter Steege *et al.* 2000). On our website a preliminary map of floodplain diversity will be present. We especially encourage the establishment of plots in these less diverse ecosystems.

Further research plans include the role of neutral models and ecology in patterns of  $\beta$ -diversity, especially in western Amazonia and the Guayana Shield, two areas for which the comparative taxonomy for a great number of plots can be resolved with the least difficulties. To further resolve the role of ecology in shaping tree composition of forest communities (and plots therein) it is also necessary to establish plots in the various forest systems found.

For more information please visit: <http://www.bio.uu.nl/~herba/research.html>

#### **Acknowledgements**

The start of this project was supported by the Tropenbos Guyana Programme, through grant “Conservation and Sustainable Use of Botanical Diversity in Guyana” (B7-6201/98-13/FOR)

of the European Community We thank all those who worked with us in the field for their support and Peter Burrough, Alfred de Gier, Wim Dijkman, Karl Eichhorn, Gerrit Heil, Mark van Nieuwstadt, Marinus Werger, René Verburg and Roderick Zagt and two anonymous reviewers for comments on previous versions of the manuscript.

## References

- Burrough, P.A. & McDonnell R.A. 1998. *Principles of Geographic Information Systems*. Oxford University Press, Oxford.
- Bush, M.B. 1994. Amazonian speciation: a necessarily complex model. *Journal of Biogeography* 21: 5-17.
- Cade, B.S., Terrel, J.W. & Schroeder, R.L. 1999. Estimating effects of limiting factors with regression quantiles. *Ecology* 80: 311-323.
- Condit, R., Foster, R.B., Hubbell, S.P., Sukumar, R., Leigh, E.G., Manokaran, N., Loo de Lao, S., Lafrankie, J.V. & Ashton, P.S. 1998. Assessing forest diversity on small plots: calibration using species-individual curves from 50-hectare plots. Pp. 247-268 in Dallmeier, F. & Comiskey, J.A. (eds). *Forest biodiversity research, monitoring and modelling. Conceptual background and Old World case studies*. MAB Series Vol. 20. UNESCO, Paris.
- Condit, R., Pitman, N., Leigh Jr., E.G., Chave, J., Terborgh, J., Foster, R.B. Núñez Vargas, P., Aguilar, S., Valencia, R., Villa, G., Muller-Landau, H.C., Losos, E. & Hubbell, S.P. 2002. Beta-Diversity in Tropical Forest Trees. *Science* 295: 666-669.
- Colwell, R.K. & Lees, D.C. 2000. The mid-domain effect: geometric constraints on the geography of species richness. *Trends in Ecology and Evolution* 15: 70-76.
- Clinebell, R.R., Phillips, O.L., Gentry, A.H., Stark, N. & Zuuring, H. 1995. Prediction of neotropical tree and liana species richness from soil and climatic data. *Biodiversity and Conservation* 4: 56-90.
- Conservation International (1990) Workshop 90. *Biological priorities for conservation in Amazonia*. Conservation International, Washington.
- Fisher, A.A., Corbet, A.S. & Williams, C.B. 1943 The relation between the number of species and the number of individuals in a random sample of an animal population. *Journal of Animal Ecology* 12: 42-58.
- Gaston, K.J. 2000. Global patterns in biodiversity. *Nature* 504: 220-227.
- Gentry, A.H. 1988a. Tree species richness of upper Amazonian forests. *Proceedings of the National Academy of Sciences, USA* 85: 156-159.
- Gentry, A.H. 1988b. Changes in plant community diversity and floristic composition on environmental and geographical gradients. *Annals of the Missouri Botanical Garden* 75: 1-34.
- Givnish, T.J. 1999. On the causes of gradients in tropical tree diversity. *Journal of Ecology* 87: 193-210.
- Hall, J.B. & Swaine, M.D. 1976. Classification and ecology of closed-canopy forest in Ghana. *Journal of Ecology*: 64: 913-951.
- Henkel, T.W. in press. Monodominance in the ectomycorrhizal *Dicymbe corymbosa* (Caesalpiniaceae) from Guyana. *Journal of Tropical Ecology*.
- Hille Ris-Lambers, J., Clark, J. S. & Beckage B. 2000 Density-dependent mortality and the latitudinal gradient in species diversity. *Nature* 417: 732-735.
- Huston, M.A 1980. Soil nutrients and tree species richness in Costa Rican forests. *Journal of Biogeography* 7: 147-157

- Huston, M.A. 1994. *Biological Diversity. The coexistence of species on changing landscapes*. Cambridge University Press, Cambridge, UK. 681 pp.
- Kalunzy, S.P., Vega, S.C., Cardoso, T.P. & Shelly, A.A. 1998. *S+ Spatial Stats. User's Manual for Windows and UNIX*. Mathsoft Inc., Seattle.
- Kikuzawa, K. 1996. Geographical distribution of leaf life span and species diversity of trees simulated by a leaf-longevity model. *Vegetatio* 122: 61-67.
- Kleidon, A. & Mooney, H.A. 2000. A global distribution of biodiversity inferred from climatic constraints; results from a process-based modelling study. *Global Change Biology* 6: 507-523.
- Koenker, R.W. & Bassett, G.W. 1978. Regression quantiles *Econometrica* 46: 33-50.
- Leigh, E.G. 1995 Epilogue: Research on Barro Colorado Island 1980-1994. Pp. 496-503 In Leigh E.G., Rand, A.S & Windsor D.M. (eds). *The ecology of a tropical rain forest, seasonal rhythms and long term changes*. Smithsonian Institution Press, Washington.
- Mayle, F.E., Burbridge, R. & Killeen, T.J. 2000. Millennial-scale dynamics of southern Amazonian rain forests. *Science* 290: 2291-2294.
- Myers, N., Mittermeier, R.A., Mittermeier, C.G., da Fonseca, G.A.B, & Kent, J. 2000. Biodiversity hotspots for conservation priorities. *Nature* 403, 853-858.
- Oliveira, A.A. de & Mori, S.A. 1999. A central Amazonian terra firme forest I. High tree species richness on poor soils. *Biodiversity and Conservation* 8: 1219-1244.
- Phillips, O.L., Hall, P., Gentry, A.H., Sawyer, A.S. & Vasquez, R. 1994. Dynamics and species richness of tropical rain forests. *Proceedings of the National Academy of Sciences, USA* 91: 2805-2809.
- Pitman, N.C.A. 2000. *A large-scale inventory of two Amazonian tree communities*. PhD Thesis. Duke University, Durham.
- Prance, G.T. 1982. Forest refuges: evidence from woody angiosperms. Pp 137-138 in Prance, G.T. (ed.). *Biological diversification in the tropics*. Columbia University Press, New York.
- Rosenzweig, M.L. 1995. *Species diversity in space and time*. Cambridge University Press, Cambridge, UK. 436 pp.
- Sombroek, W. 2001. Spatial and temporal patterns of Amazon rainfall. Consequences for the planning of Agricultural occupation and protection of primary forests. *Ambio* 30: 388-396.
- Taylor, L.R., Kempton, R.A. & Woiwod, I.P. 1976. Diversity statistics and the log-series model. *Journal of Animal Ecology* 45: 255-272.
- Terborgh, J. 1973. On the notion of favorableness in plant ecology. *American Naturalist* 107: 481-501.
- Terborgh, J. & Andresen, E. 1998. The composition of Amazonian forests: patterns at local and regional scale. *Journal of Tropical Ecology* 14: 645-664.
- ter Steege, H & Zagt, R. 2002. Density and diversity. *Nature* 417: 698-699.
- ter Steege, H., Sabatier, S., Castellanos, H., van Andel, T., Duivenvoorden, J., de Oliveira, A.A., Ek, R.C., Lilwah, R., Maas, P.J.M., & Mori, S.A. 2000. An analysis of Amazonian floristic composition, including those of the Guiana Shield. *Journal of Tropical Ecology* 16: 801-828.
- Vasques-Martinez, R. & Phillips, O.L. 2000. Allpahuayo: floristics, structure and dynamics of a high-diversity forest in Amazonian Peru. *Annals of Missouri Botanical Garden* 87: 499-527.
- Venables, W.N. & Ripley, B.D. 1998. *Modern applied statistics with S-plus*. Springer, New York, USA. 548 pp.

## Appendix. References to plot data in the Amazon

- Absy, M.L., Prance, G.T. & Barbosa, E.M. 1987. Inventário florístico de floresta natural na área da estrada Cuiabá-Porto Velho (BR - 364). *Acta Amazonica* 16/17(supl.): 85-121.
- Almeida, S.S., Lisboa, P.L.B. & Silva, A.S. 1993. Diversidade florística de uma comunidade arbórea na estação científica “Ferreira Pena”, em Caxiuanã (Pará). *Boletim do Museu Paraense Emílio Goeldi. Serie Botânica* 9: 93-128.
- Alonso, A., Dalmeijer, F., Mistry, S., Ros, C., Udvardy, S., Comiskey, J., Núñez, P., Chuspe, M.E., Baldeón, S., Betrán, H., Santistebán, J. & Valencia, G. 1998. Flora I. Biodiversity assessment and long term monitoring, lower Urubamba Region. In Alonso, A., Dalmeijer, F. (eds.) *Biodiversity assessment in the lower Urubamba Region, Perú*. SI/MAB Series #2. SI/MAB. Smithsonian Institution, Washington.
- Amaral, I.L. 1996. *Diversidade florística em floresta de terra firme, na região de Urucu – AM*. Dissertação de Mestrado, Instituto Nacional de Pesquisas da Amazônia (INPA) /Fundação Universidade do Amazonas (FUA). Manaus.
- Amaral, I.L., Matos, F.D.A. & Lima, J. 2000. Composição florística e parâmetros estruturais de um hectare de floresta densa de terra firme no Rio Uatumã, Amazonia, Brasil. *Acta Amazonica* 30: 377-392.
- Ayres, J.M. 1981. *Observações sobre a ecologia e o comportamento do Cucuiú (Chiropotes satanes e C. satanus)*. MSc dissertation, INPA, Manaus.
- Ayres, J.M. 1993. As matas da Várzea do Mamirauá. MCT-CNPq/ Sociedade Civil Mamirauá. Brasília.
- Balee, W. 1986. Análise preliminar de inventário florestal e a etnobotânica Ka'apor (Maranhão). *Boletim do Museu Paraense Emílio Goeldi. Serie Botânica* 2: 141-167.
- Balee, W. 1987. A etnobotânica quantitativa dos índios Tembé (Rio Gurupi, Pará). *Boletim do Museu Paraense Emílio Goeldi. Serie Botânica* 3: 29-50.
- Balee, W. & Campbell, D.G. 1990. Evidence for the successional status of liana forest (Xingu river basin, Amazonian Brazil). *Biotropica* 22: 36-47.
- Balslev, H., Luteyn, J., Ollgaard, B. & Holm-Nielsen, L.B. 1987. Composition and structure of adjacent unflooded and floodplain forest in Amazonian Ecuador. *Opera Botanica* 92: 37-57.
- Balslev, H., Valencia, R., Paz Y Mino, G., Christensen, H. & Nielsen, I. 1998. Species count of vascular plants in one hectare of humid lowland forest in Amazonian Ecuador. Pp. 585-594 in Dallmeier, F. & Comiskey, J.A. (eds). *Forest biodiversity in North, Central and South America, and the Caribbean. Research and Monitoring*. MAB Series Vol. 21. UNESCO, Paris.
- Barbosa, E.M. 1988. Análise estrutural de uma floresta natural na reserva de pesquisa ecológica do INPA em Ouro Preto do Oeste – Rondônia. MSc Thesis INPA. Manaus
- Bergmans, F. & Vroomans, V. 1995. *Availability and sustainability of forest resources: a research to the structure and species composition of a north Bolivian Amazon forest and its actual and future resource availability*. Thesis, Larenstein Agricultural College, Velp, The Netherlands.
- Black, G.A., Dobzhansky, T.H. & Pavan, C. 1950. Some attempts to estimate species diversity and population density of trees in Amazonian forests. *Botanical Gazette* 111: 413-425.
- Boom, B.M. 1986. A forest inventory in Amazonian Bolivia. *Biotropica* 18: 287-294.
- Boubli, J.P. 1999. Feeding ecology of black-headed Uacaris (*Cacajó melanocephalus melanocephalus*) in Pico da Neblina National Park, Brazil. *International Journal of Primatology* 20: 719-749.
- Cain, S.A., De Oliveira Castro, M., Murça Pires, J. & Da Silva, N.T. 1956. Application of some phytosociological techniques to Brazilian rain forest. *American Journal of Botany* 43: 911-941.
- Campbell, D.G., Daly, D.C., Prance, G.T. & Ubirajara, N.M. 1986. Quantitative ecological inventory of terra firme and varzea tropical forest on the Rio Xingu, Brazilian Amazon. *Brittonia* 38: 369-393.
- Campbell, D.G., Stone, J.L. & Rosas, A. 1992. A comparison of the phytosociology and dynamics of three floodplain (varzea) forests of known ages, Rio Jurua, western Brazilian Amazon. *Botanical Journal of the Linnean Society* 108: 213-237.
- Castellanos, H.G. 1998. Floristic composition and structure, tree diversity, and the relationship between floristic distribution and soil factors in El Caura Forest Reserve, southern Venezuela. Pp. 507-533 in Dallmeier, F. & Comiskey, J.A. (eds). *Forest biodiversity in North, Central and South America, and the Caribbean. Research and Monitoring*. MAB Series Vol. 21. UNESCO, Paris.
- Cerón, C.E. & Montalvo, C.A. 1997. Composición y estructura de una hectárea de bosque en la Amazonía Ecuatoriana - con información etnobotánica de los Huaorani Pp. 153-172 in Valencia, R. & Balslev, H. (eds). *Estudios sobre diversidad de plantas. Memorias de II congreso Ecuatoriana de Botánica*. Pontificia Universidad Católica del Ecuador, Quito.
- Cerón, C.E., Fernández, D.M., Jiménez, E.D. & Pillojo, I. 2000. Composición y estructura de una igapo Ecuatoriano. *Cinchona* 1: 41-70.

- Comiskey, J.A., Aymard, G. & Dallmeier, F. 1994. Structure and composition of lowland mixed forest in the Kwakwani region of Guyana. *Biollonia* 10: 13-28.
- Dallmeier, F., Kabel, M. & Foster, R.B. 1996. Floristic composition, diversity, mortality and recruitment of different substrates: lowland tropical forest, Pakitzá, Rio Manu, Peru. Pp. 61-88 in Wilson, D.E. & Sandoval, A. (eds). *Manu: the diversity of Southeastern Peru*. Smithsonian Institution, Washington.
- Davis, T.A.W. & Richards, P.W. 1934. The vegetation of Moraballi creek, British Guiana. An ecological study of a limited area of tropical rain forest. II. *Journal of Ecology* 22: 106-155.
- De Lima Filho, D. de A., Matos, F.D. de A., do Amaral, I.L., Revilla, J, Coêlho, L. de S., Ramos, J.F. & dos Santos, J.L. 2001. Inventário florístico de floresta ombrófila densa de terra firme, na região do Rio Uruca – Amazonas, Brasil. *Acta Amazonica* 31: 565-579.
- De Walt, S.J., Bourdy, G., Chavez de Michel, L.R. & Quenevo, C. 1999. Ethnobotany of the Tacana. Quantitative inventories of two permanent plots of northwestern Bolivia. *Economic Botany* 53: 237-260.
- Duivenvoorden, J.F. & Lips, J.M. 1995. *A land-ecological study of soils, vegetation and plant diversity in Colombian Amazonia*. Tropenbos Series 12. Tropenbos Foundation, Wageningen, The Netherlands.
- Duivenvoorden, J.F. & Lips, J.M. 1998. Mesoscale patterns of tree species diversity in Colombian Amazonia. Pp. 535-549 in Dallmeier, F. & Comiskey, J.A. (eds). *Forest biodiversity in North, Central and South America, and the Caribbean. Research and monitoring*. MAB Series Vol. 21. UNESCO, Paris.
- Dezseo, N., Maquirino, P., Berry, PE. & Aymard, G. 2000. Principales bosques en el area de San Carlos de Rio Negro, Venezuela. *SCIENTIA GUAIANÆ* 11: 15-36.
- Ek, R.C. 1997. *Botanical diversity in the tropical rain forest of Guyana*. Tropenbos-Guyana Programme, Georgetown, Guyana.
- Fanshawe, D.B. 1954. Forest types of British Guiana. *Caribbean Forester* 15: 73-111.
- Ferreira, L.V. 1997. Effects of the duration of flooding on species richness and floristic composition in three hectares in the Jaú National park in floodplain forest in central Amazonia. *Biodiversity and Conservation* 6: 1353-1363.
- Ferreira, L.V. & Prance, G.T. 1998a. Structure and species richness of low-diversity floodplain forest on the Rio Tapajós, Eastern Amazonia, Brazil. *Biodiversity and Conservation* 7: 585-596.
- Ferreira, L.V. & Prance, G.T. 1998b. Species richness and floristic composition in four hectares in the Jaú National Park in upland forests in Central Amazonia. *Biodiversity and Conservation* 7: 1349-1364.
- Ferreira, L.V. & Rankin-de Merona, J.M. 1998. Floristic composition and structure of a one-hectare forest in central Amazonia. Pp. 649-662 in Dallmeier, F. & Comiskey, J.A. (eds). *Forest biodiversity in North, Central and South America, and the Caribbean. Research and Monitoring*. MAB Series Vol. 21. UNESCO, Paris.
- Finol Urdaneta, H. undated. *Silvicultura de la Mora de Guiana (Mora gonggrijpii)*. Facultad de Ciencias Forestales. Instituto de Silvicultura, Mérida, Venezuela. 73 pp.
- Gazel, M. 1983. *Croissance des arbres et productivité des peuplement en forêt dense équatoriale de Guyane*. Office National de Forêts, Cayenne, France. 129 pp.
- Gentry, A.H. 1988a. Tree species richness of upper Amazonian forests. *Proceedings of the National Academy of Sciences, USA* 85: 156-159.
- Gentry, A.H. 1988b. Changes in plant community diversity and floristic composition on environmental and geographical gradients. *Annals of the Missouri Botanical Garden* 75: 1-34.
- Gentry, A.H. 1990. Floristic similarities and differences between southern Central America and upper and central Amazonia. Pp. 141-157 in Gentry, A.H. (ed.). *Four neotropical rain forests*. Yale University Press, New Haven.
- Gentry, A.H. & Terborgh, J. 1990. Composition and dynamics of the Cocha Cashu “mature” floodplain forest. Pp. 542-564 in Gentry, A.H. (ed.). *Four neotropical rain forests*. Yale University Press, New Haven.
- Johnston, M. & Gillman, M. 1995. Tree population studies in low-diversity forests, Guyana. I. Floristic composition and stand structure. *Biodiversity and Conservation* 4: 339-362.
- Jonkers, W.B.J. 1987. *Vegetation structure logging damage and silviculture in a tropical rain forest in Suriname*. Wageningen Agricultural University, Wageningen, The Netherlands. 172 pp.
- Klinge, H., Adis, J. & Worbes, M. 1995. The vegetation of a seasonal varzea forest in the lower Solimoes River, Brazilian Amazonia. *Acta Amazonica* 25: 201-220.
- Korning, J. & Balslev, H. 1994. Growth and mortality of trees in Amazonian tropical rain forest in Ecuador. *Journal of Vegetation Science* 4: 77-86
- Laurance, W.F., Ferreira, L.V., Rankin-de Merona, J.M. & Hutchings, R.W. 1998. Influence of plot shape on estimates of tree diversity and community composition in central Amazonia. *Biotropica* 30: 662-665.
- Lleras, E. 1997. Upper Rio Negro region. Brazil, Colombia, Venezuela. Pp. 333-337 in Davis, S.D., Heywood, V.H., Herrera-MacBryde, O., Vila-Lobos, J & Hamilton, A.C. (eds). *Centres of plant diversity. A guide*

- and strategy for their conservation. Volume 3 *The Americas*. World-Wide Fund for Nature & World Conservation Union, Gland.
- Londoña Vega, A.C. 1993. *Análisis estructural de dos bosques asociados a unidades fisiográficas contrastantes, en la región de Araracuara (Amazonia Colombiana)*. Universidad de Colombia, Medellín, Colombia.
- Maas, P.J.M. 1971. Floristic observations on forest types in western Suriname I and II. *Proceedings of the Koninklijke Nederlandse Academie van Wetenschappen Ser. C* 74: 269-302.
- Maciel, U.N. & Lisboa, P.L.B. 1989. Estudo florístico de 1 hectarea de mata de terra firme Km 15 da rodovia Presidente Médici-Costa Marques (RO-429), Rondônia. *Boletim do Museu Paraense Emílio Goeldi. Serie Botânica* 5: 25-37.
- Mackensen, J., Tillery-Stevens, M., Klinge, R. & Folster, H. 2000. Site parameters, species composition, phytomass structure and element stores of a terra-firme forest in east-Amazonia, Brazil. *Plant Ecology* 151: 101-119.
- Marin, E. & Chaviel, A. 1996. La vegetación: bosques de tierra firme Pp. 60-65 in Rosales, J. & Huber O. (eds). *Ecología de la Cuenca del Río Cauca, Venezuela I. Caracterización general. Scientia Guaianae* 6.
- Matos, F.D.A. & Amaral, I.L. 1999. Análise ecológica de um hectare em floresta ombrófila densa de terra-firme, Estrada da Várzea, Amazonas, Brasil. *Acta Amazonica* 29: 365-379
- Milliken, W. 1998. Structure and composition of one hectare of central Amazonian terra firme forest. *Biotropica* 30: 530-537.
- Milliken, W. & Ratter, J.A. 1998. The vegetation of the Ilha de Maraca. Pp. 71- 112 in Milliken W. & Ratter J.A. (eds). *Maraca: the biodiversity and environment of an Amazonian Rain forest*. John Wiley & Sons, New York.
- Miranda, I.S. 2000. Análise florística e estrutural da vegetação lenhosa do Rio Comemoração, Pimenta Bueno, Rondônia, Brasil. *Acta Amazonica* 30: 393-422
- Mori, S.A. & Boom, B.M. 1987. The forest. *Memoirs of the New York Botanical Garden* 44: 9-29.
- Mori, S.A., Rabelo, B.V., Tsou, C.-H. & Daly, D. 1989. Composition and structure of an eastern Amazonian forest at Camaipa, Amapá, Brazil. *Boletim do Museu Paraense Emílio Goeldi. Serie Botanica. Serie Botânica* 5: 3-18.
- Muniz, F.H., Cesar, O. & Monteiro, R. 1994. Aspectos florísticos quantitativos e comparativos da vegetação arbórea da reserva florestal do Savecém, São Luís, Maranhão (Brasil). *Acta Amazonica* 24: 189-218.
- Nascimento, M.T., Proctor, J. & Villela, D.M. 1997. Forest structure, floristic composition and soils of an Amazonian monodominant forest on Maraca Island, Brazil. *Edinburgh Journal of Botany* 54: 1-38.
- Nebel, G., Kvist, L.P., Vanclay, J.K., Christensen, H., Freitas, L. & Ruiz, J. 2001. Structure and floristic composition of flood plain forests in the Peruvian Amazon. I Overstorey. *Forest Ecology and Management* 150: 27-57.
- Oliveira, A.A. de & Mori, S.A. 1999. A central Amazonian terra firme forest I. High tree species richness on poor soils. *Biodiversity and Conservation* 8: 1219-1244.
- Peres, C.A. 1994. Primate response to phenological changes in an Amazonian terra firme forest. *Biotropica* 26: 98-112.
- Phillips, O.L., Hall, P., Gentry, A.H., Sawyer, A.S. & Vasquez, R. 1994. Dynamics and species richness of tropical rain forests. *Proceedings of the National Academy of Sciences, USA* 91: 2805-2809.
- Pires, J.M., Dobzhansky, T.H. & Black, G.A. 1953. An estimate of the number of species of trees in an Amazonian forest community. *Botanical Gazette* 114: 467-477.
- Pires, J.M. & Koury, H.M. 1958. Estudo de um trecho de mata várzea próximo Belém. *Boletim Técnico de Instituto Agronômico do Norte* 36: 3-44.
- Pitman, N.C.A. 2000. *A large-scale inventory of two Amazonian tree communities*. PhD Thesis. Duke University, Durham.
- Pitman, N.C.A., Terborgh, J., Silman, M.R. & Nunez-V, P. 1999. Tree species distributions in an upper Amazonian forest. *Ecology*: 80: 2651-2661.
- Ramdass, I., Singh, J., Tamessar, M. & Gopaul, D. 1997. *National activity on the use of biodiversity, Guyana*. UNDP/Office of the President/University of Guyana, Georgetown, Guyana.
- Rankin-de Merona, J.M., Hutchings, R.W. & Lovejoy, T.E. 1990. Tree mortality and recruitment over a five-year period in undisturbed upland rain forest of the central Amazon. Pp. 573-584 in Gentry, A.H. (ed.). *Four neotropical rain forests*. Yale University Press, New Haven.
- Rankin-de Merona, J.M., Prance, G.T., Hutchings, R.W., Da Silva, M.F., Rodrigues, W.A. & Uehling, M.E. 1992. Preliminary results of a large-scale tree inventory of upland rain forest in the Central Amazon *Acta Amazonica*: 22, 493-534.
- Rodrigues, W.A. 1963. Estudo de 2,6 hectares de mata terra firme da Serra do Navio, Território do Amapá. *Boletim do Museu Paraense Emílio Goeldi Nova Série* 19: 1-44.

- Sabatier, D. 1990. Diversité des arbres et du peuplement forestier en Guyane. Pp. 41-47 In *Gestion de l'écosystème forestier et aménagement de l'espace régional*. SEPANGUI Cayenne. pp.
- Sabatier, D. & Prevost, M.F. 1987. *Une forêt a Cacaoyers sauvages sure le Haut-Camopi, en Guyane Française*. ORSTOM, Cayenne, France. 29pp.
- Sabatier, D., Grimaldi, M., Prevost, M.-F., Guillaume, J., Godron, M., Dosso, M. & Curmi, P. 1997. The influence of soil cover organization on the floristic and structural heterogeneity of a Guianan rain forest. *Plant Ecology* 131: 81-108.
- Salomão, R.P. 1991. Uso de parcelas permanentes para estudos da vegetação da floresta tropical úmida. I. Município de Marabá, Pará. *Boletim do Museu Paraense Emílio Goeldi. Serie Botânica* 7: 543-604.
- Salomão, R.P. & Lisboa, P.L. 1988. Análise ecológica da vegetação de uma floresta pluvial tropical de terra firme, Rondônia. *Boletim do Museu Paraense Emílio Goeldi. Serie Botânica* 4: 195-233.
- Salomão, R.P., Silva, M.F.F. & Lisboa, P.L. 1988. Inventário ecológico em floresta pluvial tropical de terra firme, Serra Norte, Carajás, Pará. *Boletim do Museu Paraense Emílio Goeldi Serie Botânica* 4: 1-46
- Schulz, J.P. 1960. *Ecological studies on rain forest in northern Surinam*. Van Eedenfonds, Amsterdam, The Netherlands.
- Seidel, R.S. 1995 Inventário de los árboles en tres parcelas de bosque primario en la Serranía de Marimónos, Alto Beni. *Ecologia en Bolivia* 25: 1-35.
- Silva, A.S.L., Lisboa, P.L.B. & Maciel, U.N. 1992. Diversidade florística e estrutura em floresta densa da bacia do Rio Juruá-Am. *Boletim do Museu Paraense Emílio Goeldi Serie Botânica* 8: 203-253.
- Silva, M.F.F. & Rosa, N.A. 1989. Análise do estrato arbóreo da vegetação sobre jazidas de cobre na Serra do Carajás-PA. *Boletim do Museu Paraense Emílio Goeldi. Serie Botânica* 5: 175-206.
- Silva, M.F.F., Rosa, N.A. Oliveira, J. 1987. Estudos botânicos na área do projecto Ferro Carajás. 5. Aspectos florísticos da mata do Rio Gelado, Pará. *Boletim do Museu Paraense Emílio Goeldi. Serie Botânica*. 3: 1-20.
- Silva, M.F.F., Rosa, N.A. & Salomão, R.P. 1986. Estudos botânicos na área do projecto Ferro Carajás. 3. Aspectos florísticos da mata do aeroporto de Serra Norte - PA. *Boletim do Museu Paraense Emílio Goeldi. Serie Botânica* 2: 169-187.
- Smith, D.N. & Killeen, T.J. 1998. A comparison of the structure and composition of montane and lowland tropical forest in the Serrania Pilón, Beni, Bolivia. Pp. 681-700 in Dallmeier, F. & Comiskey, J.A. (eds). *Forest biodiversity in North, Central and South America, and the Caribbean. Research and monitoring*. MAB Series Vol. 21. UNESCO, Paris.
- Spichiger, R., Loizeau, P.-A., Latour, C. & Barriera, G. 1996. Tree species richness of a South-Western Amazonian forest (Jenaro Herrera, Peru, 73°40'W/ 4°54'S). *Candollea* 51: 559-577.
- Stergios, B., Comiskey, J.A., Dallmeier, F. & Licata A Nino, M. 1998. Species diversity, spatial distribution and structural aspects of semi-deciduous lowland gallery forests in the western Llanos of Venezuela. Pp. 449-479 in Dallmeier, F. & Comiskey, J.A. (eds). *Forest biodiversity in North, Central and South America, and the Caribbean. Research and monitoring*. MAB Series Vol. 21. UNESCO, Paris.
- Stern, M.J. 1998. Field comparisons of two rapid vegetation assessment techniques with permanent plot inventory data in Amazonian Peru. Pp. 269-283 in Dallmeier, F. & Comiskey, J.A. (eds). *Forest biodiversity research, monitoring and modelling. Conceptual background and Old World case studies*. MAB Series Vol. 20. UNESCO, Paris.
- Stevenson, P.R., Castellanos, M.C. & del Pilar Medina, A. 1999. Elementos arboreos de los bosques de uno plano inundable en el parque nacional natural Tinigua, Colombia *Caldasia* 21: 38-49.
- Thomas, R.S. 2001. *Forest productivity and resource availability in lowland tropical forests in Guyana*. PhD Thesis Imperial College London. Tropenbos-Guyana Series 7. Tropenbos-Guyana Programme, Georgetown, Guyana.
- Uhl, C. & Murphy, P.G. 1981. Composition, structure, and regeneration of tierra firme forest in the Amazon basin of Venezuela. *Tropical Biology* 22: 219-237.
- Urrego Giraldo, L.E. 1997. *Los bosques inundables del Medio Caqueta. Caracterización y sucesión Estudios en la Amazonia Colombiana XIV*. Tropenbos Colombia, Bogota.
- Valencia, R., Balsev, H., Palacios, W., Neill, D., Josse, C., Tirado, M. & Skov, F. 1998. Diversity and family composition of trees in different regions of Ecuador: a sample of 18 one-hectare plots. Pp. 569-584 in Dallmeier, F. & Comiskey, J.A. (eds). *Forest biodiversity in North, Central and South America, and the Caribbean. Research and monitoring*. MAB Series Vol. 21. UNESCO, Paris, France.
- Valencia, R., Balslev, H. & Paz Y Mino, G. 1994. High tree alpha-diversity in Amazonian Ecuador. *Biodiversity and Conservation* 3: 21-28.
- van Andel, T. 2001. *Non-timber forest products of the North-West District of Guyana. Part I*. PhD Thesis Utrecht University. Tropenbos-Guyana Series 8A. Tropenbos-Guyana Programme, Georgetown, Guyana.

- Vasques-Martinez, R. & Phillips, O.L. 2000. Allpahuayo: floristics, structure and dynamics of a high-diversity forest in Amazonian Peru. *Annals of Missouri Botanical Garden* 87: 499-527.
- Worbes, M., Klinge, H., Revilla, J.D. & Martius, C. 1992. On the dynamics, floristic subdivision and geographical distribution of várzea forests in Central Amazonia. *Journal of Vegetation Science* 3: 553-564.

**Other used plot data from unpublished sources**

- C. Baider (Brazil)  
H. Castellanos (Venezuela)  
D. Daly & M. Silveira (Brazil)  
R. Ek & P. van der Hout (Guyana) D. Sabatier *et al.* (French Guiana)  
W. Morawetz *et al.* (Venezuela)

**New unused plot data (to be used in our first web update)**

- Henkel, T.W. in press. Monodominance in the ectomycorrhizal *Dicymbe corymbosa* (Caesalpinaceae) from Guyana. *Journal of Tropical Ecology*.
- Jardim, M.A.G. & Vieira, I.C.G. 2001. Composição florística e estrutura de uma floresta de várzea do estuário Amazônico, Ilha do Combu, Estado do Pará, Brasil. *Boletim do Museu Paraense Emílio Goeldi. Serie Botânica* 17: 333-354.
- Wittman, F., Anhuf, D. & Junk, W.J. 2002. Tree species distribution and community structure of central Amazonian várzea forests by remote-sensing techniques. *Journal of Tropical Ecology* 18: 805-820.
- J. Lindeman & J. Schulz (Suriname, unpublished data)

---

<sup>1</sup> This was the number when the analyses were carried out. During manuscript review a few more plots came to our knowledge. They are listed in the appendix and will be used in the updated map on our website.